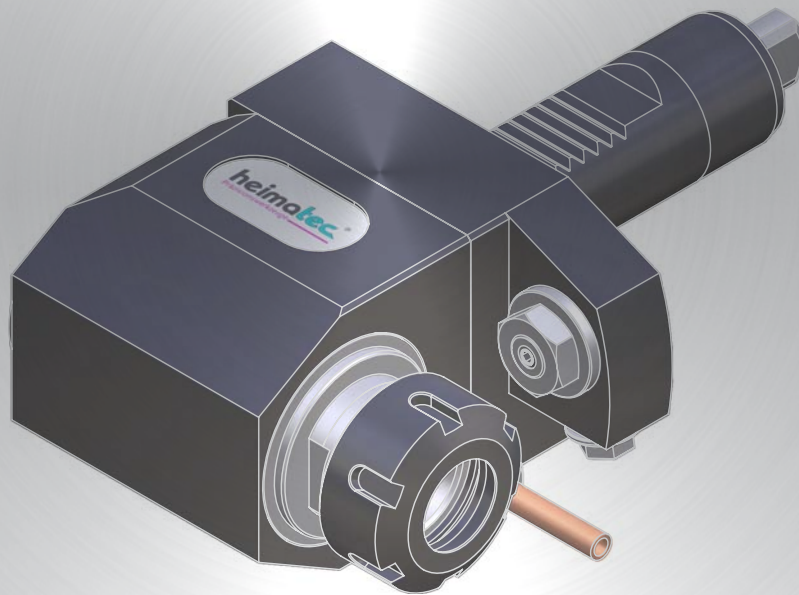


Werkzeugkatalog

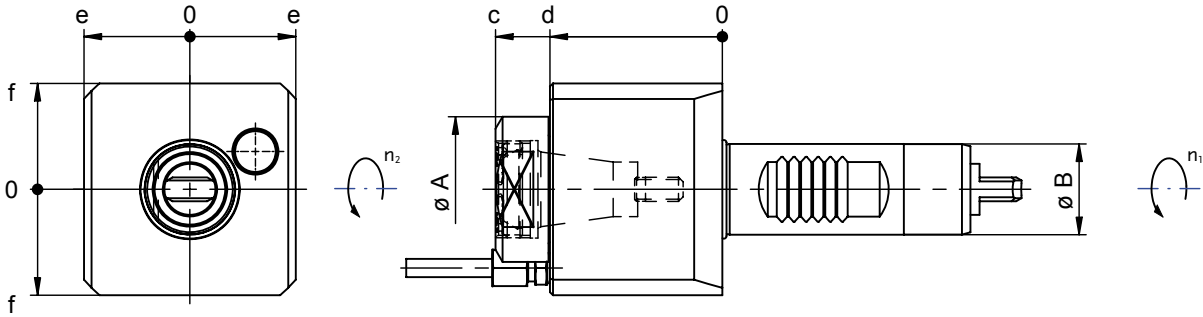
tool catalogue



Mori Seiki

ZT 1000 / 1500
ZT 1000 Y / 1500 Y

- ▶ Werkzeugaufnahme: Spannzangenaufnahme (DIN 6499)
clamping application: collet chuck (DIN 6499)



Darstellung symbolisch
symbolic drawing

	$n_2 = +n_1$
i	1 : 1
M_{max.}	25 Nm
n_{max.}	6000 min ⁻¹

Bestell-Nr. ref.-no.	Werkzeugaufnahme clamping application	IK D 00...	p _{max.} [mm]	Ø A [mm]	Ø B [mm]	c [mm]	d [mm]	e [mm]	f [mm]
8 010 25 095	DIN 6499 - ER 25 A	–	–	48	30	75	57	35	35
8 010 25 096	DIN 6499 - ER 25 A	003	25	48	30	75	57	35	35



- ▶ Interne Kühlmittelzufuhr: Angaben unter „IK“ in Tabelle mit Diagramm „D 00 ...“ beachten
for internal coolant supply: please note the diagram „D 00 ...“ which is mentioned in the table below in the column named „IK“

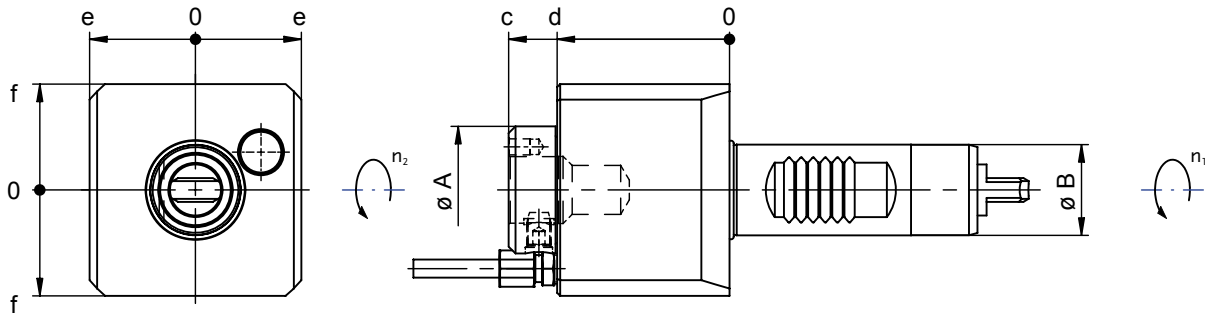
* Nicht im Lieferumfang enthalten
* not included in delivery


- ▶ Weitere Ausführungen auf Anfrage
further versions on request


Axial- Bohr- und Fräskopf

Axial drilling and milling head

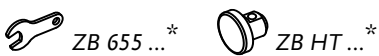
- ▶ Werkzeugaufnahme: *easy-quick*
clamping application: *easy-quick*



 Darstellung symbolisch
symbolic drawing

	$n_2 = +n_1$
i	1 : 1
$M_{max.}$	25 Nm
$n_{max.}$	6000 min ⁻¹

Bestell-Nr. ref.-no.	Werkzeugaufnahme clamping application	IK D 00...	$P_{max.}$ [mm]	$\varnothing A$ [mm]	$\varnothing B$ [mm]	c [mm]	d [mm]	e [mm]	f [mm]
8 010 26 035	<i>easy-quick</i> HT 4	–	–	42	30	73	57	35	35
8 010 26 036	<i>easy-quick</i> HT 4	003	25	42	30	73	57	35	35

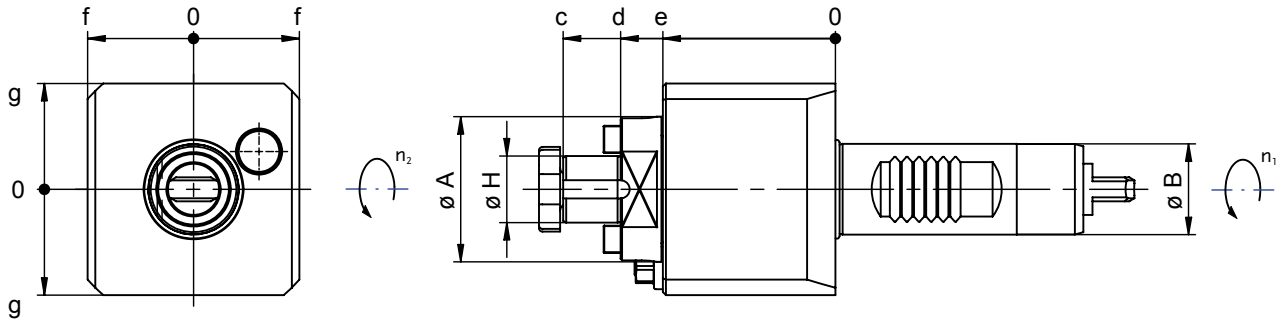


- ▶ Interne Kühlmittelzufuhr: Angaben unter „IK“ in Tabelle mit Diagramm „D 00 ...“ beachten
for internal coolant supply: please note the diagram „D 00 ...“ which is mentioned in the table below in the column named „IK“

* Nicht im Lieferumfang enthalten
* not included in delivery

- ▶ Weitere Ausführungen auf Anfrage
further versions on request

- ▶ Werkzeugaufnahme: Kombidorn
clamping application: universal arbor



Darstellung symbolisch
symbolic drawing

	$n_2 = +n_1$
i	1 : 1
$M_{max.}$	25 Nm
$n_{max.}$	6000 min ⁻¹

Bestell-Nr. ref.-no.	Werkzeugaufnahme clamping application	Ø A [mm]	Ø B [mm]	Ø H [mm]	c [mm]	d [mm]	e [mm]	f [mm]	g [mm]
8 011 25 011	Kombidorn 22 / universal arbor 22	48	30	22	90	71	57	35	35



ZB 655 ...*



ZB 620 ...*

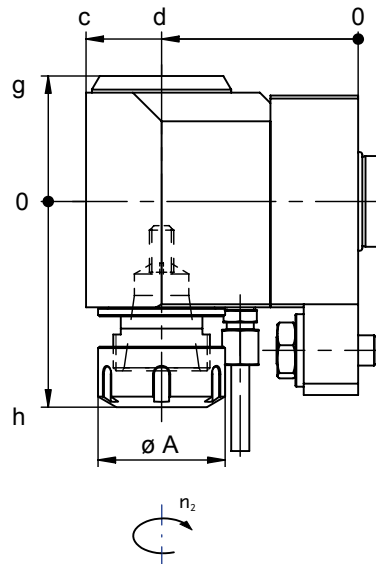
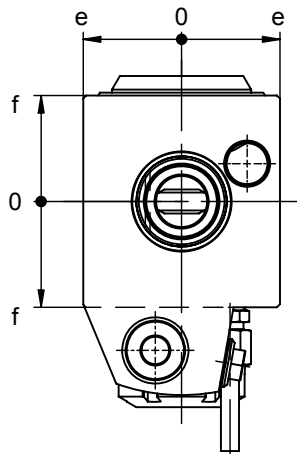
- * Nicht im Lieferumfang enthalten
- * not included in delivery

- ▶ Weitere Ausführungen auf Anfrage
further versions on request

Winkel- Bohr- und Fräskopf

radial drilling and milling head

- ▶ Werkzeugaufnahme: Spannzangenaufnahme (DIN 6499)
clamping application: collet chuck (DIN 6499)



Darstellung:
drawing:
Ausführung rechts (R)
right-hand version (R)



Darstellung symbolisch
symbolic drawing

- ▶ Ausführung rechts (R): wie gezeichnet
right-hand version (R): as shown
- ▶ Ausführung links (L): spiegelbildlich
left-hand version (L): reversed-image

	$n_2 = -n_1$
i	1 : 1
$M_{max.}$	25 Nm
$n_{max.}$	6000 min ⁻¹

Bestell-Nr. ref.-no.		Werkzeugaufnahme clamping application	IK D 00...	$p_{max.}$ [mm]	$\varnothing A$ [mm]	$\varnothing B$ [mm]	c [mm]	d [mm]	e [mm]	f [mm]	g [mm]	h [mm]
8 030 25 142	R	DIN 6499 - ER 25	–	–	42	30	90	65	32,5	35	41,5	68
8 030 25 143	L	DIN 6499 - ER 25	–	–	42	30	90	65	32,5	35	41,5	68
8 030 25 146	R	DIN 6499 - ER 25	000	25	42	30	90	65	32,5	35	52	68
8 030 25 147	L	DIN 6499 - ER 25	000	25	42	30	90	65	32,5	35	52	68

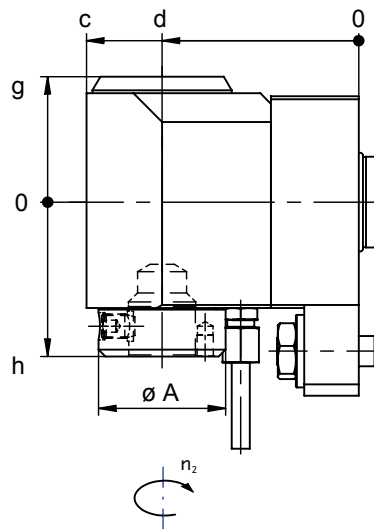
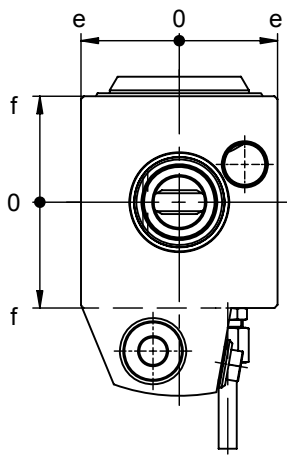
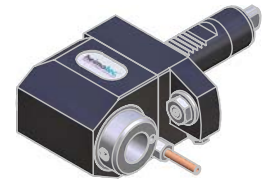


- ▶ Interne Kühlmittelzufuhr: Angaben unter „IK“ in Tabelle mit Diagramm „D 00 ...“ beachten
for internal coolant supply: please note the diagram „D 00 ...“ which is mentioned in the table below in the column named „IK“

* Nicht im Lieferumfang enthalten
* not included in delivery

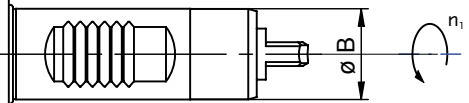
- ▶ Weitere Ausführungen auf Anfrage
further versions on request

- ▶ Werkzeugaufnahme: *easy-quick*
clamping application: *easy-quick*



Darstellung:
drawing:

Ausführung rechts (R)
right-hand version (R)

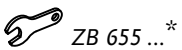


Darstellung symbolisch
symbolic drawing

- ▶ Ausführung rechts (R): wie gezeichnet
right-hand version (R): as shown
- ▶ Ausführung links (L): spiegelbildlich
left-hand version (L): reversed-image

	$n_2 = - n_1$
i	1 : 1
$M_{max.}$	25 Nm
$n_{max.}$	6000 min ⁻¹

Bestell-Nr. ref.-no.		Werkzeugaufnahme clamping application	IK D 00...	$p_{max.}$ [mm]	$\varnothing A$ [mm]	$\varnothing B$ [mm]	c [mm]	d [mm]	e [mm]	f [mm]	g [mm]	h [mm]
8 030 26 050	R	<i>easy-quick</i> HT 4	–	–	42	30	90	65	32,5	35	41,5	51
8 030 26 051	L	<i>easy-quick</i> HT 4	–	–	42	30	90	65	32,5	35	41,5	51
8 030 26 052	R	<i>easy-quick</i> HT 4	000	25	42	30	90	65	32,5	35	52	51
8 030 26 053	L	<i>easy-quick</i> HT 4	000	25	42	30	90	65	32,5	35	52	51



ZB 655 ...*



ZB HT ...*

- ▶ Interne Kühlmittelzufuhr: Angaben unter „IK“ in Tabelle mit Diagramm „D 00 ...“ beachten
for internal coolant supply: please note the diagram „D 00 ...“ which is mentioned in the table below in the column named „IK“

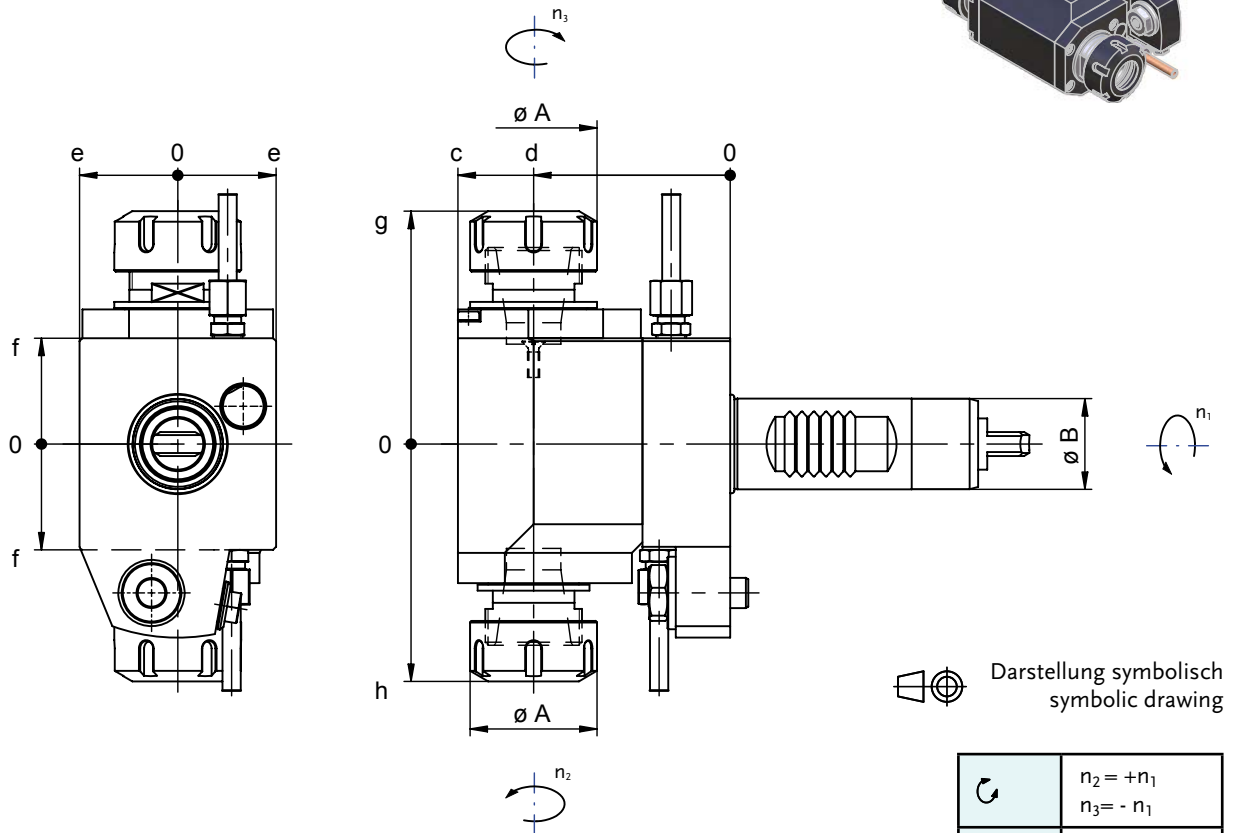
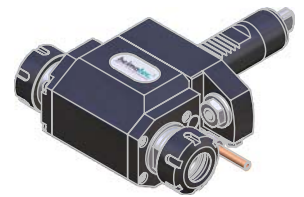
* Nicht im Lieferumfang enthalten
* not included in delivery

- ▶ Weitere Ausführungen auf Anfrage
further versions on request

Winkel- Bohr- und Fräskopf

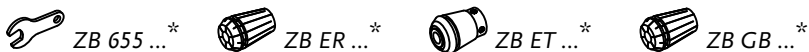
radial drilling and milling head

- ▶ Werkzeugaufnahme: Spannzangenaufnahme (DIN 6499)
clamping application: collet chuck (DIN 6499)



	$n_2 = +n_1$ $n_3 = -n_1$
i	1 : 1
M_{max.}	25 Nm
n_{max.}	6000 min ⁻¹

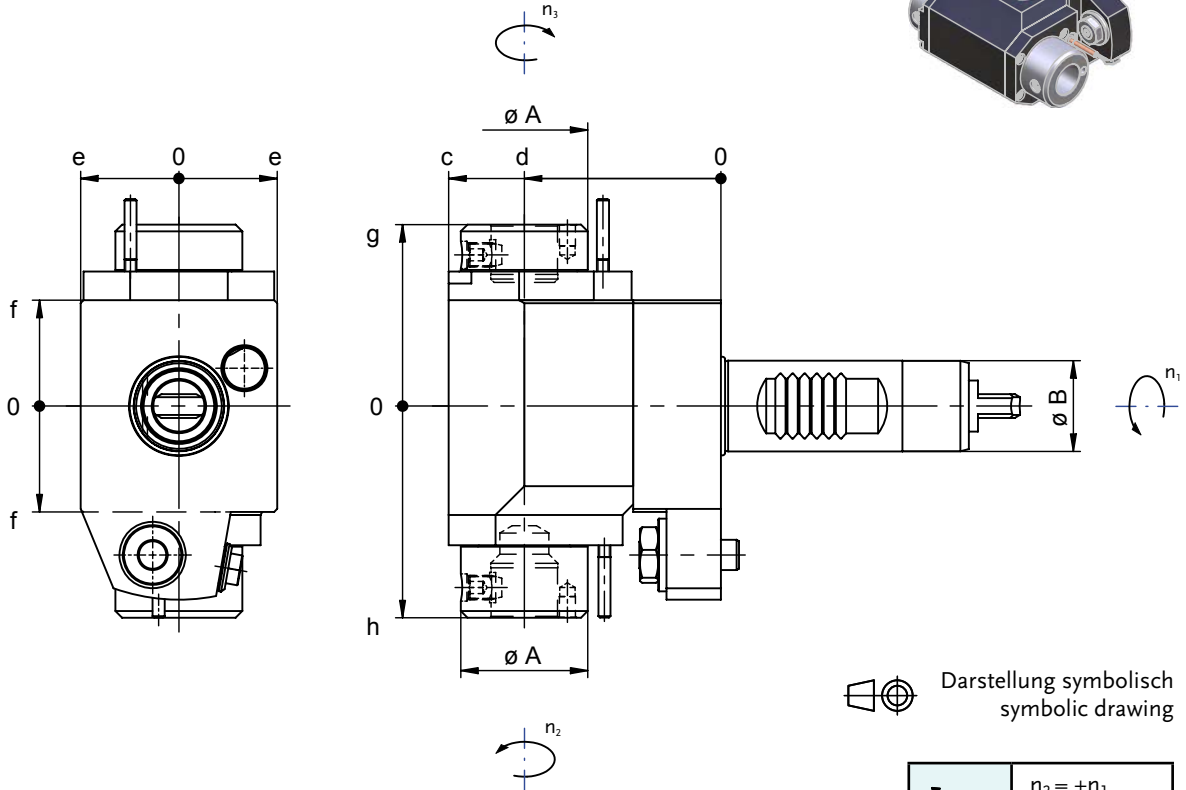
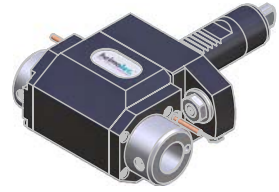
Bestell-Nr. ref.-no.	Werkzeugaufnahme clamping application	ø A [mm]	ø B [mm]	c [mm]	d [mm]	e [mm]	f [mm]	g [mm]	h [mm]
8 039 25 022	DIN 6499 - ER 25	42	30	90	65	32,5	35	77	78,5



- * Nicht im Lieferumfang enthalten
- * not included in delivery

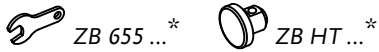
- ▶ Weitere Ausführungen auf Anfrage
further versions on request

- ▶ Werkzeugaufnahme: *easy-quick*
clamping application: *easy-quick*



	$n_2 = +n_1$ $n_3 = -n_1$
i	1 : 1
M_{max.}	25 Nm
n_{max.}	6000 min ⁻¹

Bestell-Nr. ref.-no.	Werkzeugaufnahme clamping application	ø A [mm]	ø B [mm]	c [mm]	d [mm]	e [mm]	f [mm]	g [mm]	h [mm]
8 039 26 005	<i>easy-quick</i> HT 4	42	30	90	65	32,5	35	60	70



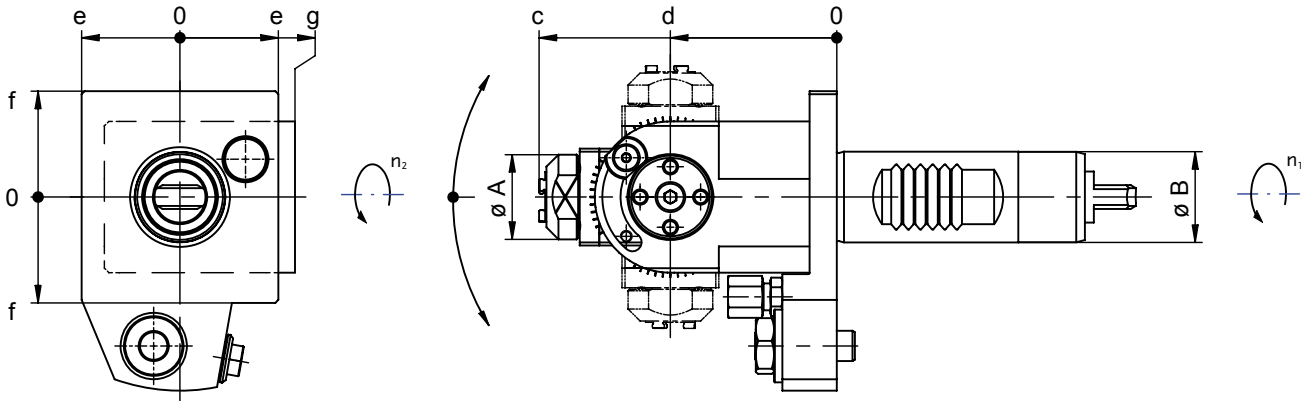
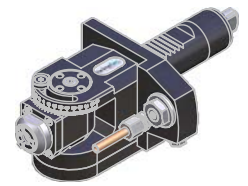
- * Nicht im Lieferumfang enthalten
- * not included in delivery


- ▶ Weitere Ausführungen auf Anfrage
further versions on request


Schwenkkopf

milling and drilling head, swivelling

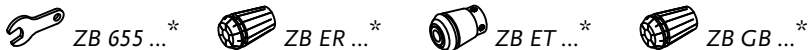
- ▶ Werkzeugaufnahme: Spannzangenaufnahme (DIN 6499)
clamping application: collet chuck (DIN 6499)
- ▶ Schwenkbereich $\pm 90^\circ$
swivel range $\pm 90^\circ$



 Darstellung symbolisch
symbolic drawing

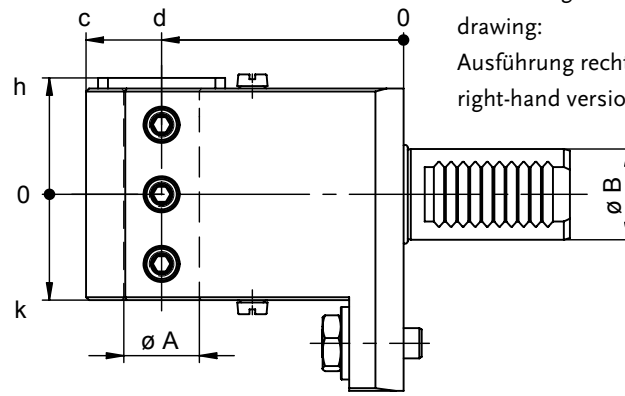
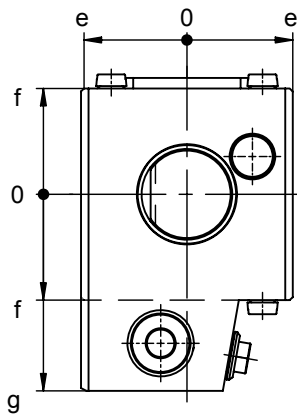
	$n_2 = +n_1$
i	1 : 1
$M_{max.}$	10 Nm
$n_{max.}$	6000 min ⁻¹

Bestell-Nr. ref.-no.	Werkzeugaufnahme clamping application	Ø A [mm]	Ø B [mm]	c [mm]	d [mm]	e [mm]	f [mm]	g [mm]
8 040 23 014	DIN 6499 - ER 11 A	28	30	98,4	55	32,5	35	38



* Nicht im Lieferumfang enthalten
* not included in delivery

- ▶ Weitere Ausführungen auf Anfrage
further versions on request



Darstellung:
drawing:
Ausführung rechts (R)
right-hand version (R)

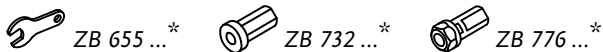
Mori Seiki ZT 1000 / 1500 / 1000 Y / 1500 Y

- ▶ Ausführung rechts (R): wie gezeichnet
right-hand version (R): as shown
- ▶ Ausführung links (L): spiegelbildlich
left-hand version (L): reversed-image



Darstellung symbolisch
symbolic drawing

Bestell-Nr. ref.-no.		ø A [mm]	ø B [mm]	c [mm]	d [mm]	e [mm]	f [mm]	g [mm]	h [mm]	k [mm]
8 230 27 029	R	25	30	105	80	35	35	65	38,5	35
8 231 27 013	L	25	30	105	80	35	35	65	35	38,5
8 230 28 025	R	32	30	105	80	35	35	65	38,5	35
8 231 28 018	L	32	30	105	80	35	35	65	35	38,5
8 230 27 030	R	25	30	90	65	35	35	65	38,5	35
8 231 27 014	L	25	30	90	65	35	35	65	35	38,5
8 230 28 026	R	32	30	90	65	35	35	65	38,5	35
8 231 28 019	L	32	30	90	65	35	35	65	35	38,5

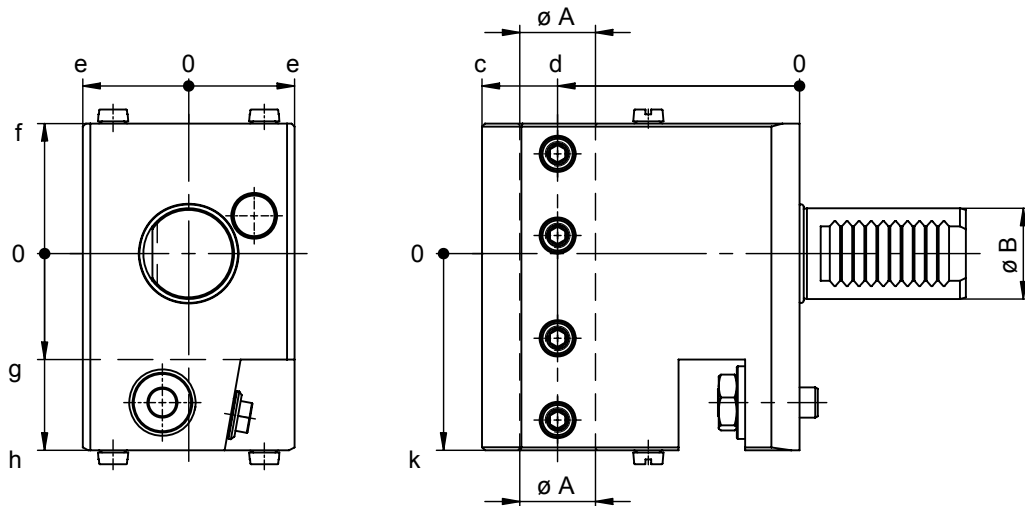


- * Nicht im Lieferumfang enthalten
- * not included in delivery

- ▶ Weitere Ausführungen auf Anfrage
further versions on request

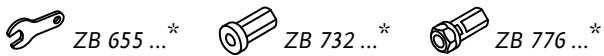
Doppel- Bohrstangenhalter

double boring bar holder



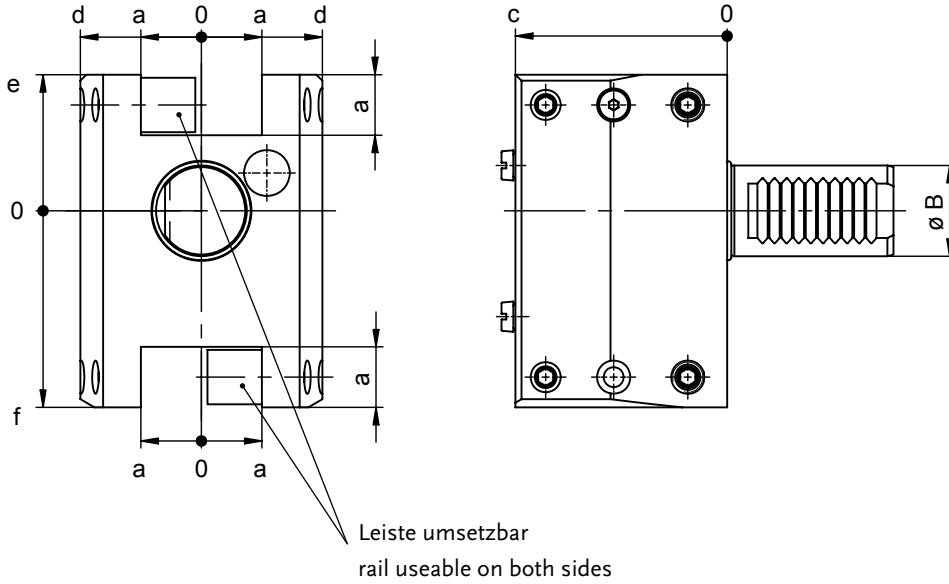
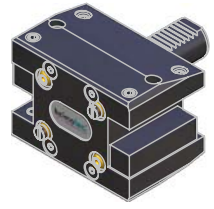
Darstellung symbolisch
symbolic drawing

Bestell-Nr. ref.-no.	Ø A [mm]	Ø B [mm]	c [mm]	d [mm]	e [mm]	f [mm]	g [mm]	h [mm]	k [mm]
8 239 27 008	25	30	105	80	35	43	35	65	65
8 239 28 006	32	30	105	80	35	43	35	65	65




* Nicht im Lieferumfang enthalten
* not included in delivery

► Weitere Ausführungen auf Anfrage
further versions on request



Darstellung symbolisch
symbolic drawing

Bestell-Nr. ref.-no.	Werkzeugaufnahme clamping application	a [mm]	Ø B [mm]	c [mm]	d [mm]	e [mm]	f [mm]
8 251 24 003	□ 20	20	30	70	40	45	65

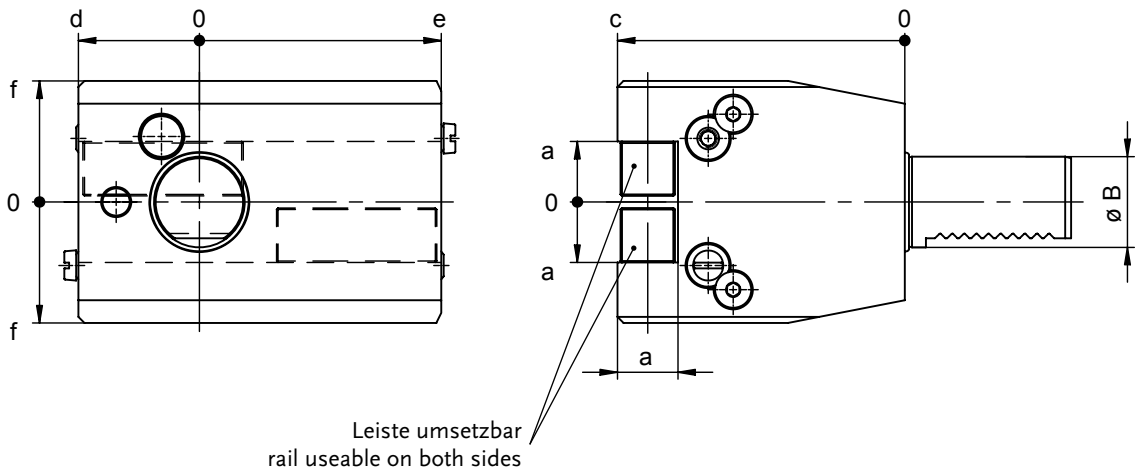
 ZB 655 ...*


* Nicht im Lieferumfang enthalten
* not included in delivery

► Weitere Ausführungen auf Anfrage
further versions on request


Kombi- Plandrehhalter

combi facing holder



 Darstellung symbolisch
symbolic drawing

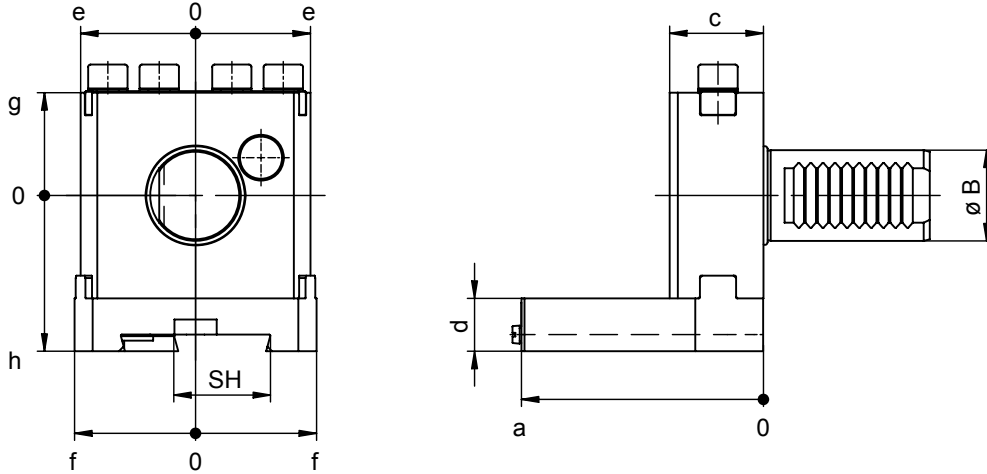
Bestell-Nr. ref.-no.	Werkzeugaufnahme clamping application	a [mm]	ø B [mm]	c [mm]	d [mm]	e [mm]	f [mm]
8 234 24 001	□ 20	20	30	95	40	80	40


 ZB 655 ...*

* Nicht im Lieferumfang enthalten
* not included in delivery


► Weitere Ausführungen auf Anfrage
further versions on request

- ▶ Werkzeugaufnahme: Schwerhöhe SH
clamping application: hight of parting blade SH



 Darstellung symbolisch
symbolic drawing

Bestell-Nr. ref.-no.	SH	a [mm]	Ø B [mm]	c [mm]	d [mm]	e [mm]	f [mm]	g [mm]	h [mm]
8 320 22 007	26	75	30	31	16	35	38	34	50
8 320 23 005	32	80	30	31	17,5	38	40	34	51,5

 ZB 655 ...*

- ▶ Universelle Einsatzmöglichkeiten
universal application types
- 1 Halter = 4 Varianten**
1 holder = 4 versions

Stechschwert nicht im Lieferumfang enthalten
parting blade not included in delivery

Variante 1
version 1



Variante 2
version 2



Variante 3
version 3



Variante 4
version 4



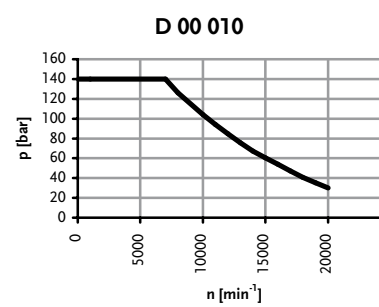
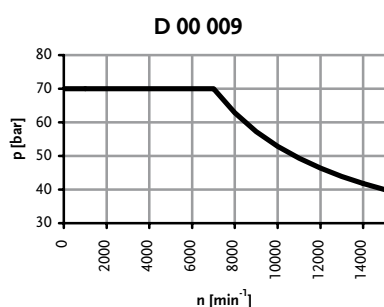
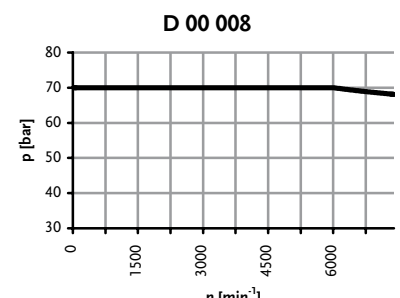
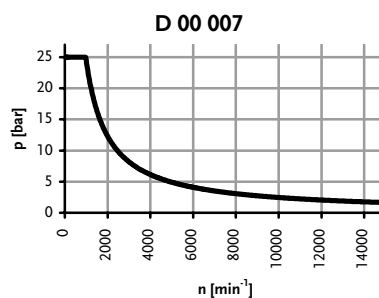
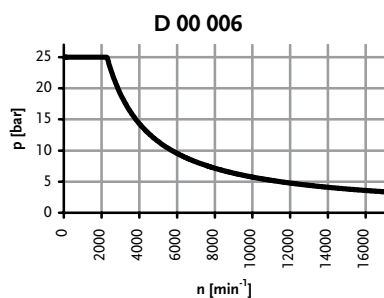
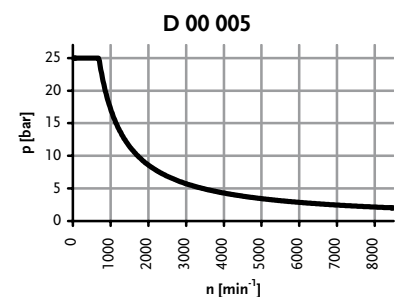
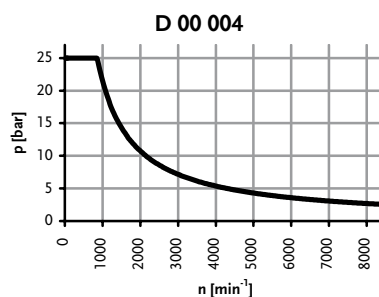
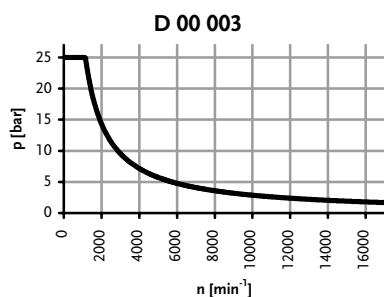
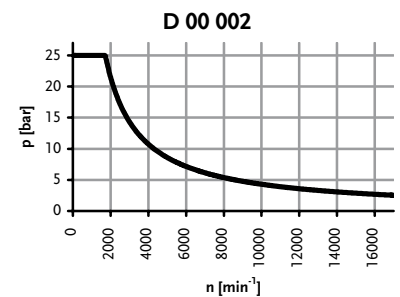
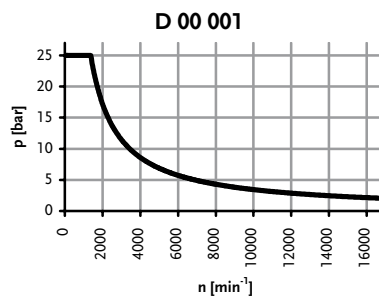
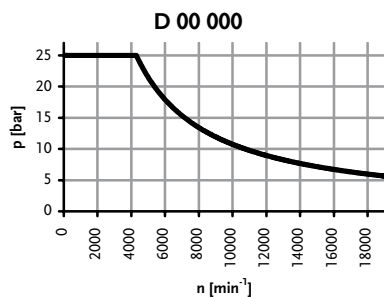
* Nicht im Lieferumfang enthalten
* not included in delivery











- ▶ Weitere Ausführungen auf Anfrage
further versions on request

Kühlmitteldruck-Diagramme

diagrams of the cooling agent pressure

- Die Diagramme stellen die Drehzahlabhängigkeit der verschiedenen Dichtungstypen dar.
- Zu beachtendes Diagramm gemäß den Angaben zu den heimatec-Produkten wählen.
- Kein Betrieb ohne Kühlmittel!
- Trockenlauf reduziert die Lebensdauer drastisch.
- Sauberes Kühlmittel verwenden, empfohlene Filtration: min. 50µm.
- Fallen abrasiver Schmutz oder Schleifstaub an (z.B. bei Gussbearbeitung) sollten Werkzeuge mit den Diagrammen D 00 008 oder D 00 009 bevorzugt verwendet werden.
- The diagram shows the relation between speed and various sealsystem.
- Please note, use diagram that fits to heimatec product.
- No dry running!
- Dry running will reduce the life of your tool dramatically.
- use only clean filtered coolant: min. 50µm.
- If tools are used in critical conditions, e.g. processing with cast-iron (dust), please use tools with diagram D00 008 or D 00 009.



Symbole symbols	Zubehörblatt accessory sheet
 ZB 655 ...*	Bedienwerkzeuge service tools
 ZB ER ...*	Spannzangen ER-DIN 6499 collets ER-DIN 6499
 ZB ET ...*	Gewindebohrzangen ET-DIN 6499 tapping collets ET-DIN 6499
 ZB GB ...*	Gewindebohrzangen GB tapping collets GB
 ZB 741 ...*	Dichtscheiben Sealing discs
 ZB 620 ...*	Fräsdornringe milling arbor spacers
 ZB HT ...*	<i>easy-quick</i>
 ZB UT ...*	u-tec
 ZB 776 ...*	Spannzangenfutter collet chuck
 ZB 73. ...*	Reduzierbuchsen reducing sleeves

► Weitere Ausführungen auf Anfrage
further versions on request



Darstellung symbolisch
symbolic drawing

* Nicht im Lieferumfang enthalten
* not included in delivery

Hauptsitz/headquarters

heimatec® GmbH
Präzisionswerkzeuge
Carl-Benz-Straße 4
D- 77871 Renchen
Postfach 11 36
D- 77867 Renchen
Tel.: +49 (78 43) 94 66 0
Fax: +49 (78 43) 94 66 66
www.heimatec.de
info@heimatec.de

heimatec® Inc.
16 E. Piper Lane Suite 121
USA- 60070 Prospect Heights IL
Tel.: +1 (847) 749 0633
Fax: +1 (847) 749 2445
www.heimatecinc.com
info@heimatecinc.com

heimatec® - Ost, JSC
ul. Kozjubinskogo 4 office 209
RUS- 121351 Moskau
Tel.: +7 (495) 648 69 19
Fax: +7 (495) 648 69 19
www.heimatec-ost.ru
sales@heimatec-ost.ru

